

**ELL antibody - C-terminal region**  
**Rabbit Polyclonal Antibody**  
**Catalog # AI10007****Specification**

---

**ELL antibody - C-terminal region - Product Information**

Application	WB, IHC
Primary Accession	<a href="#">P55199</a>
Other Accession	<a href="#">P55199</a> , <a href="#">NP_006523</a> , <a href="#">NM_006532</a>
Reactivity	Human, Mouse, Rat, Zebrafish, Dog, Guinea Pig, Horse, Bovine
Predicted	Human, Mouse, Rat, Zebrafish, Chicken, Dog, Horse, Bovine
Host	Rabbit
Clonality	Polyclonal
Calculated MW	68 kDa KDa

**ELL antibody - C-terminal region - Additional Information****Gene ID** 8178

**Alias Symbol** **MEN, ELL1, PPP1R68, C19orf17**

**Other Names**  
RNA polymerase II elongation factor ELL, Eleven-nineteen lysine-rich leukemia protein, ELL, C19orf17

**Target/Specificity**

ELL was shown to encode a previously uncharacterized elongation factor that can increase the catalytic rate of RNA polymerase II transcription by suppressing transient pausing by polymerase at multiple sites along the DNA. Functionally, ELL resembles Elongin (SIII), a transcription elongation factor regulated by the product of the von Hippel-Lindau (VHL) tumor suppressor gene.

**Format**

Liquid. Purified antibody supplied in 1x PBS buffer with 0.09% (w/v) sodium azide and 2% sucrose.

**Reconstitution & Storage**

Add 100 ul of distilled water. Final anti-ELL antibody concentration is 1 mg/ml in PBS buffer with 2% sucrose. For longer periods of storage, store at -20°C. Avoid repeat freeze-thaw cycles.

**Precautions**

ELL antibody - C-terminal region is for research use only and not for use in diagnostic or therapeutic procedures.

**ELL antibody - C-terminal region - Protein Information****Name** ELL**Synonyms** C19orf17

### Function

Elongation factor component of the super elongation complex (SEC), a complex required to increase the catalytic rate of RNA polymerase II transcription by suppressing transient pausing by the polymerase at multiple sites along the DNA. Elongation factor component of the little elongation complex (LEC), a complex required to regulate small nuclear RNA (snRNA) gene transcription by RNA polymerase II and III (PubMed:<a href="http://www.uniprot.org/citations/22195968" target="\_blank">22195968</a>, PubMed:<a href="http://www.uniprot.org/citations/23932780" target="\_blank">23932780</a>). Specifically required for stimulating the elongation step of RNA polymerase II- and III-dependent snRNA gene transcription (PubMed:<a href="http://www.uniprot.org/citations/23932780" target="\_blank">23932780</a>). ELL also plays an early role before its assembly into in the SEC complex by stabilizing RNA polymerase II recruitment/initiation and entry into the pause site. Required to stabilize the pre-initiation complex and early elongation.

### Cellular Location

Nucleus. Nucleus speckle. Nucleus, Cajal body. Note=Colocalizes with EAF2 to nuclear speckles (PubMed:12446457). Colocalizes with coilin in subnuclear cajal and histone locus bodies (PubMed:12686606). Translocates in the LEC complex to cajal and histone locus bodies at snRNA genes in a ICE1- dependent manner. Associates to transcriptionally active chromatin at snRNA genes (PubMed:23932780).

### Tissue Location

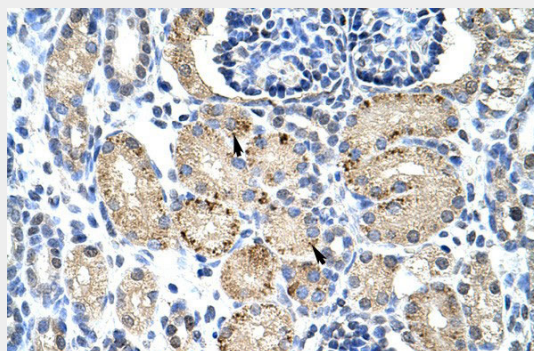
Expressed in all tissues tested. Highest levels found in placenta, skeletal muscle, testis and peripheral blood leukocytes

### ELL antibody - C-terminal region - Protocols

Provided below are standard protocols that you may find useful for product applications.

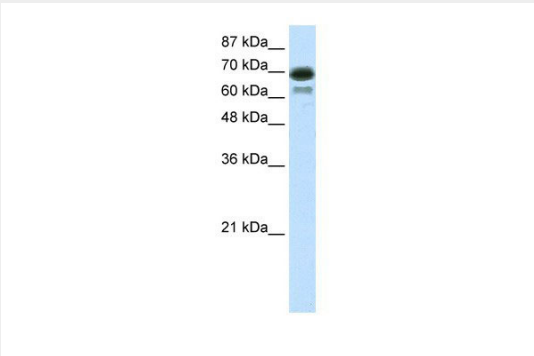
- [Western Blot](#)
- [Blocking Peptides](#)
- [Dot Blot](#)
- [Immunohistochemistry](#)
- [Immunofluorescence](#)
- [Immunoprecipitation](#)
- [Flow Cytometry](#)
- [Cell Culture](#)

### ELL antibody - C-terminal region - Images



ELL antibody - C-terminal region (AI10007) in Human kidney cells using Immunohistochemistry  
Rabbit Anti-ELL Antibody  
Paraffin Embedded Tissue: Human Kidney

Cellular Data: Epithelial cells of renal tubule  
Antibody Concentration: 4.0-8.0 µg/ml  
Magnification: 400X



87 kDa  
70 kDa  
60 kDa  
48 kDa  
36 kDa  
21 kDa

ELL antibody - C-terminal region (AI10007) in Transfected 293T cells using Western Blot  
WB Suggested Anti-ELL Antibody Titration: 7.5µg/ml  
ELISA Titer: 1:312500  
Positive Control: Transfected 293T

#### **ELL antibody - C-terminal region - Background**

This is a rabbit polyclonal antibody against ELL. It was validated on Western Blot and immunohistochemistry by Abgent. At Abgent we manufacture rabbit polyclonal antibodies on a large scale (200-1000 products/month) of high throughput manner. Our antibodies are peptide based and protein family oriented. We usually provide antibodies covering each member of a whole protein family of your interest. We also use our best efforts to provide you antibodies recognize various epitopes of a target protein. For availability of antibody needed for your experiment, please inquire ([sales@abgent.com](mailto:sales@abgent.com)).